

**WC147069E**

## **SADBURY ALUMINIUM DOUBLE DOOR ILLUMINATED CABINET**



### **MATERIAL**

Aluminium  
Mirrored Glass Doors

### **FINISH / COLOUR**

Satin Silver Anodised

### **FREQUENTLY USED APPLICATIONS**

Commercial Washrooms  
Hotels  
Domestic Dwellings

### **FEATURES**

- Aluminium cabinet with double sided mirrored doors.
- Decorative LED lighting bar with rocker switch operation.
- Integrated shaver socket.
- Two adjustable toughened glass shelves.
- 180 degree pivot door hinges for increased accessibility.
- Supplied fully assembled for ease of installation.
- Easy to install Hang 'n' Lock system.
- IP44 rated, suitable for use in the outside bathroom zone.
- All fixtures and fittings included.

### **PERFORMANCE STANDARDS**


Meets Performance Requirements Of Service Condition 2.

BS EN ISO 9221:2017 - Corrosion Resistant (NSS 48hr Salt Spray, Min. Grade9).

Certified to:

LVD - BS EN 60598-1:2015

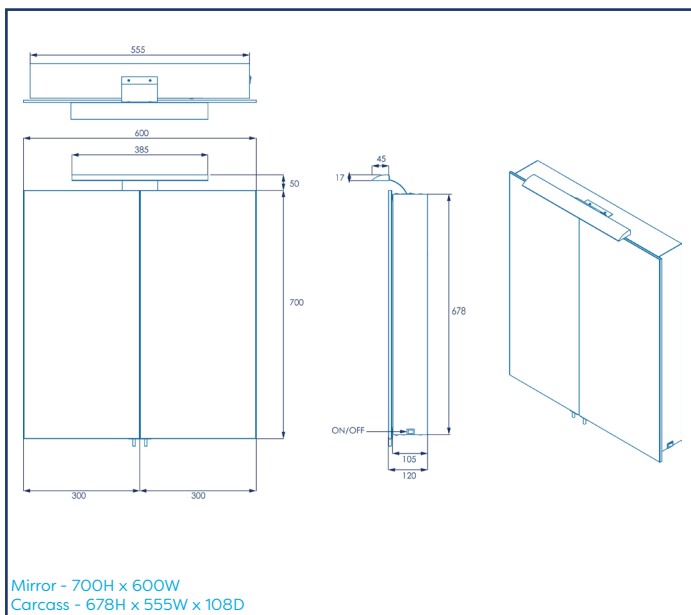
EMC - BS EN 55015:2013, BS EN 61000-3-2:2014, BS EN 61000-3-3:2013, BS EN 61547:2009

INPUT VOLTAGE: 220 - 240 Vac 50Hz   
SHAVER SOCKET: 220 - 240Vac 20VA Max  
LED LAMP: 12 Vdc 5W Warm White ≤ 4000K

### **CARE AND MAINTENANCE**

Clean surfaces with a damp cloth and wipe dry using a soft cloth.

Do not use chemical or abrasive cleaners as these may damage the surface finish.

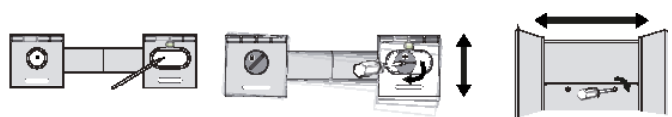


### **GUARANTEE**

Consumer Statutory Rights Apply

#### **HANG 'N' LOCK**

Easy Installation Bracket.  
Fully Adjustable.  
One Person Installation.



Printed material, designs and packaging are protected by copyright and design rights.